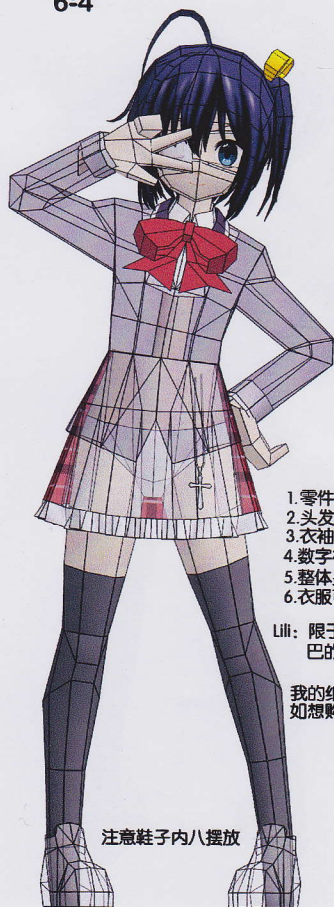
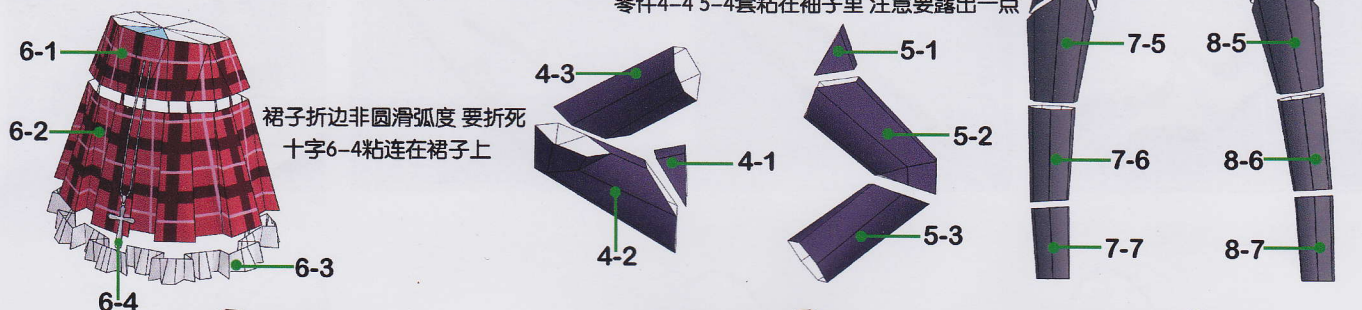
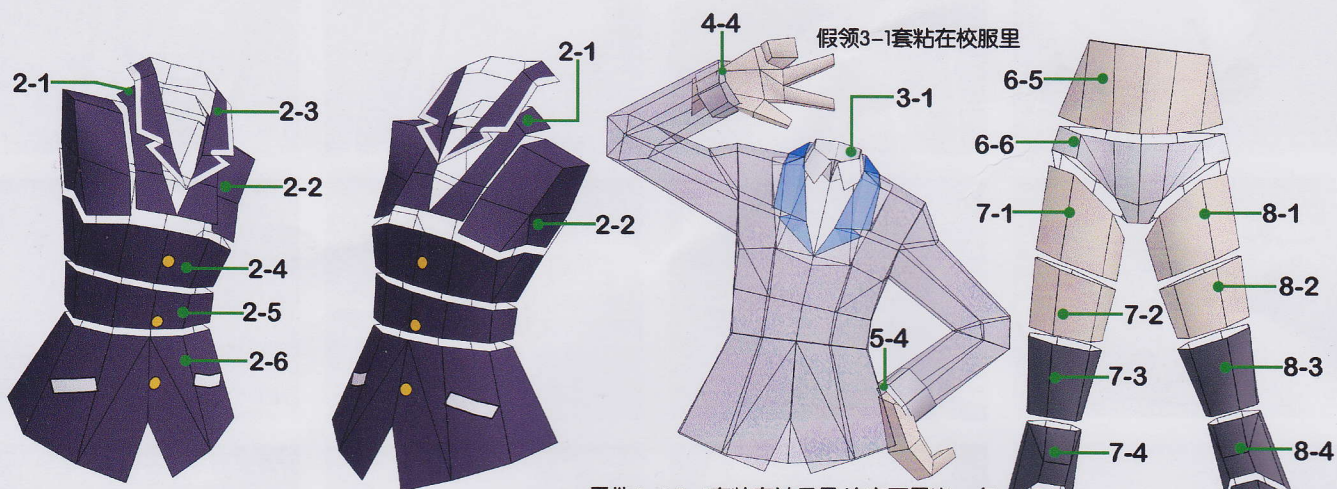
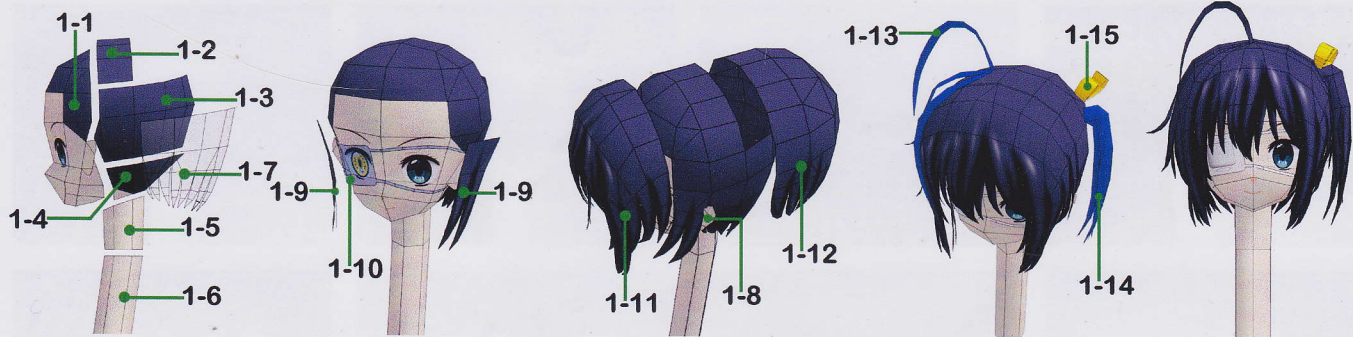


MyPapercraft.Net



小鸟游六花

纸模设计: Lili
纸模制作: 尾巴不哭

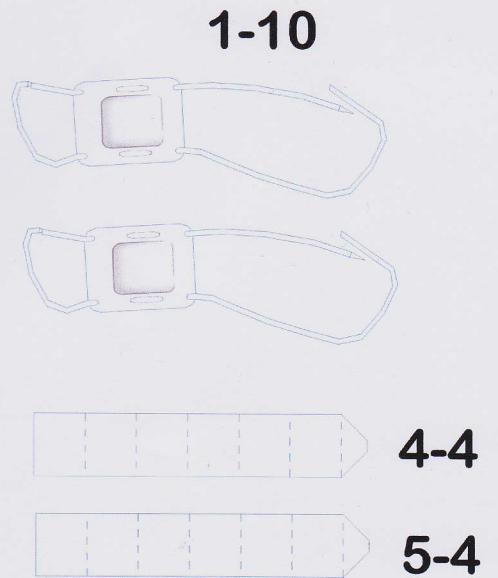
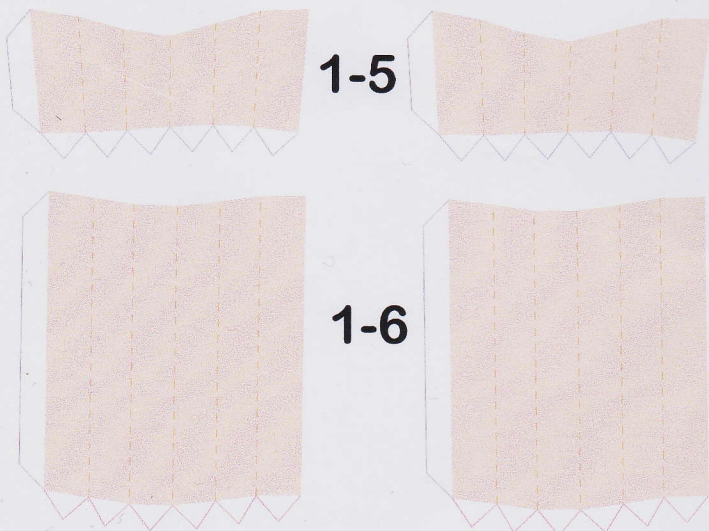
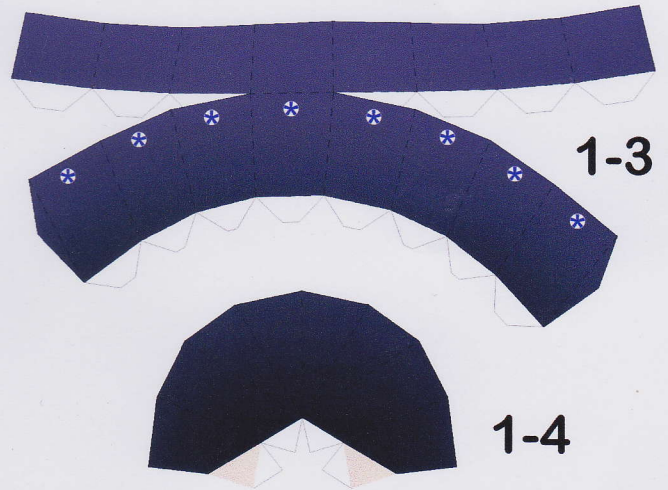
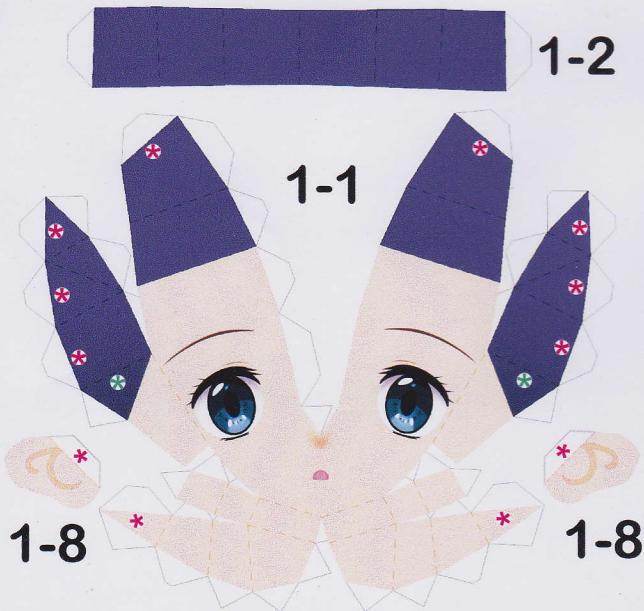
制作建议

1. 零件按编号顺序制作
2. 头发弯曲用指甲刮出来, 也可以用笔滚出来
3. 衣袖和腿折线不要折, 用细笔滚出圆滑来
4. 数字符号和颜色星号对准粘连
5. 整体头部2个可选1个制作
6. 衣服可套粘在裙子上

Lili: 限于杂志的篇幅, 更详细的制作过程照片请到尾巴的博客查看: <http://megadark.blog.163.com/>

我的纸模设计博客 <http://3eyesfish.blog.163.com/>
如想购买前期纸模的读者可以到作者的网店购买 <http://lilidiy.taobao.com/>

注意鞋子内八摆放



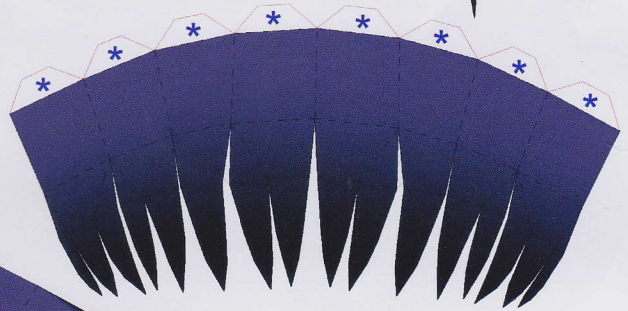
1-12



1-14



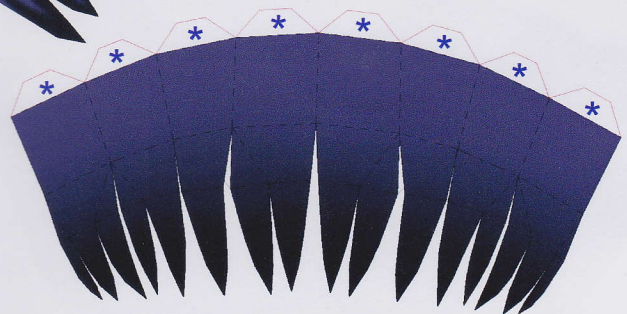
1-7



1-12



1-7



1-11



1-13

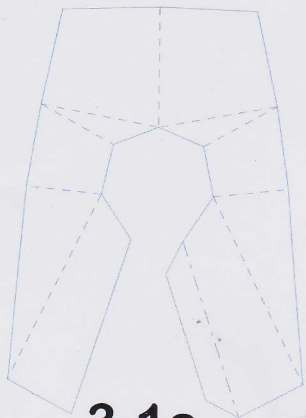


1-9

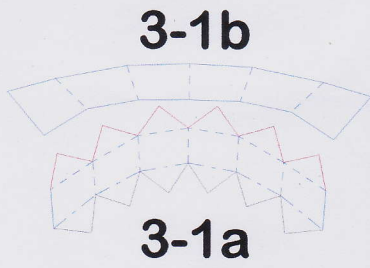
1-14

请反面打印头发色



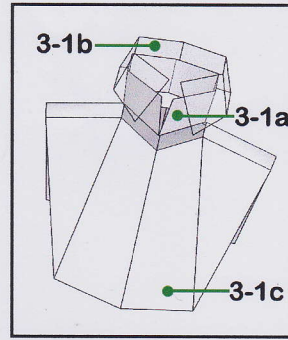


3-1c



3-1a

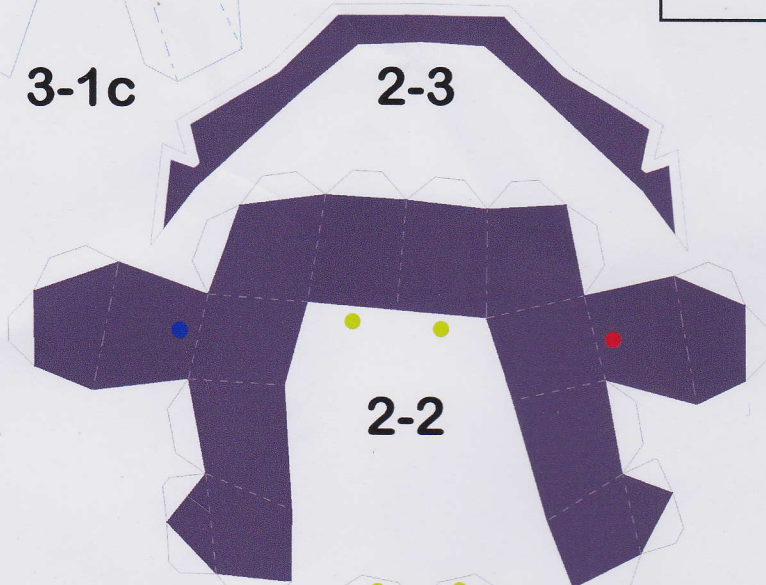
3-1b



3-1b

3-1a

3-1c

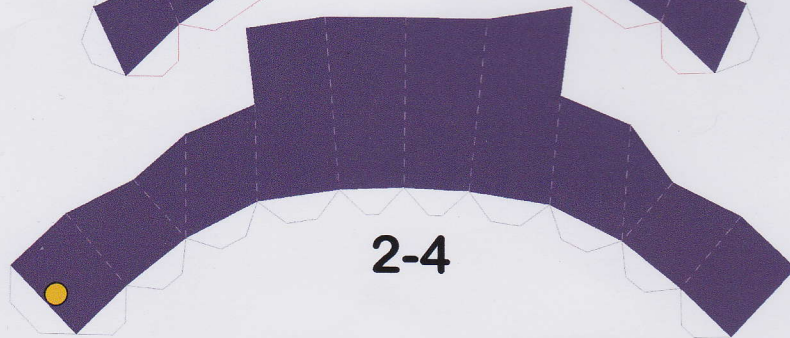


2-2

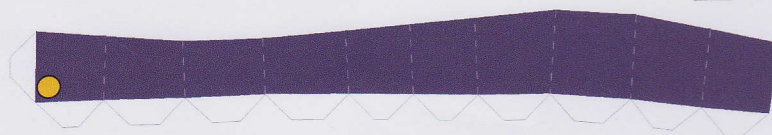
2-3



2-1



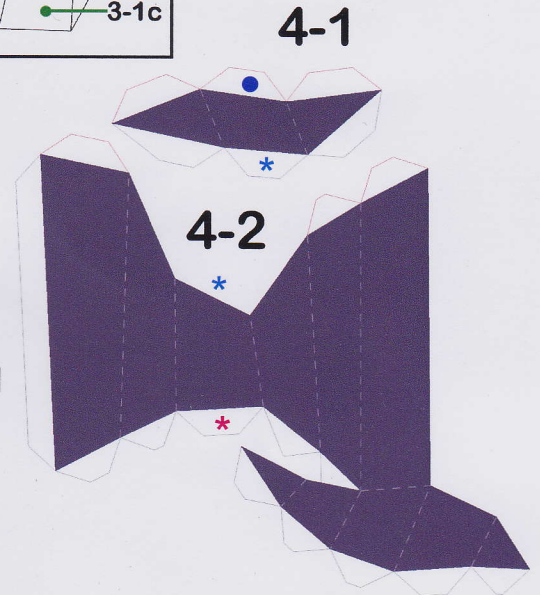
2-4



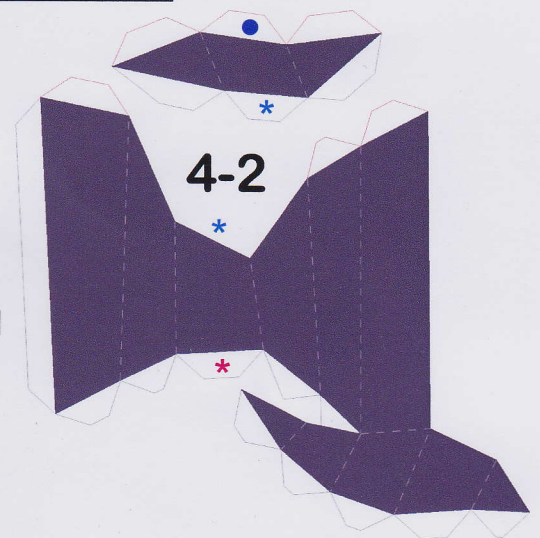
2-5



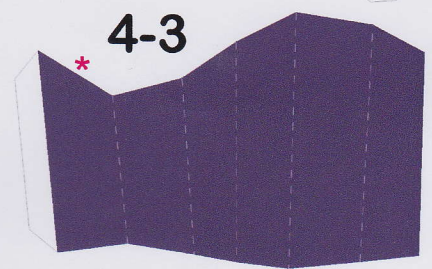
2-6



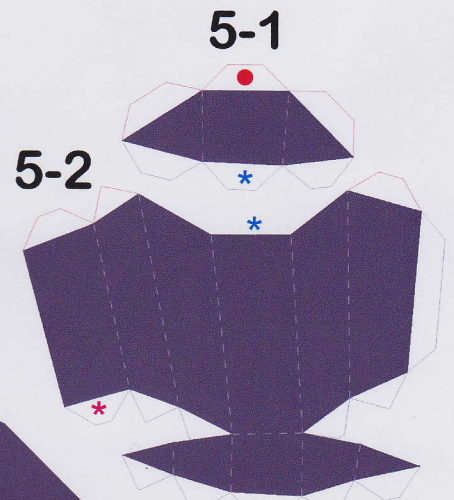
4-1



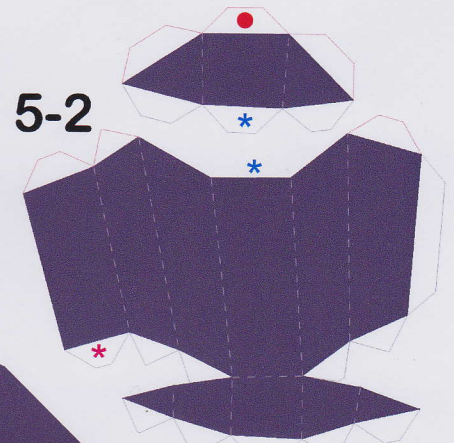
4-2



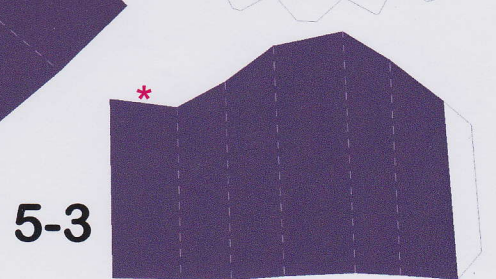
4-3



5-1



5-2



5-3

6-5

6-6

7-1

8-1

7-2

8-2

7-3

8-3

7-4

8-4

7-5

8-5

7-6

8-6

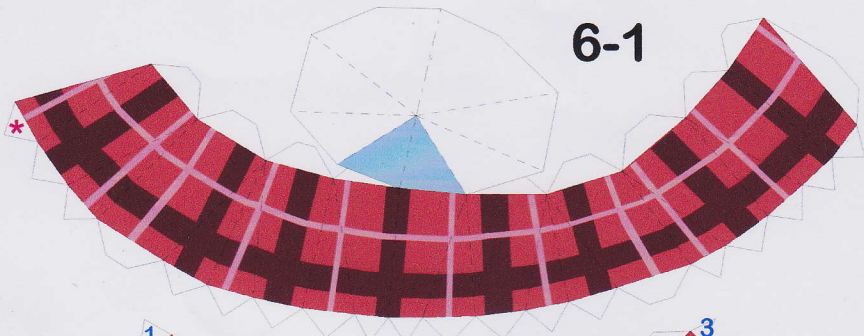
7-7

8-7

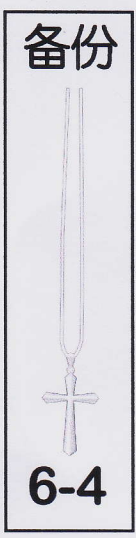




6-4

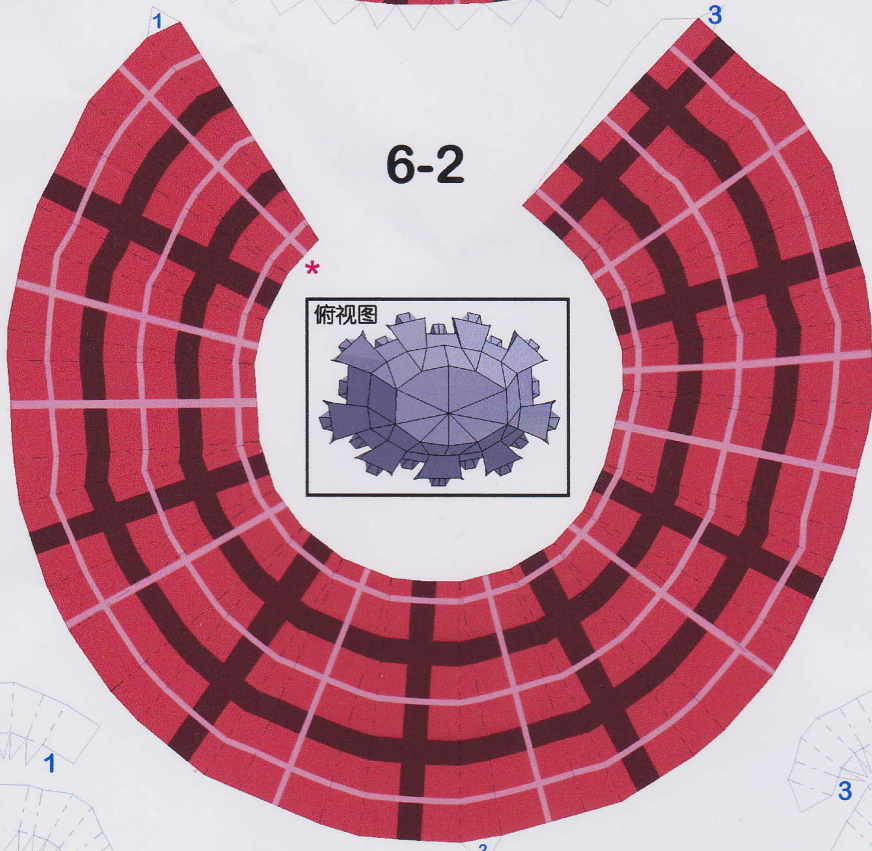


6-1

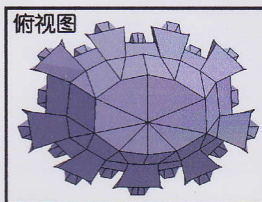


备份

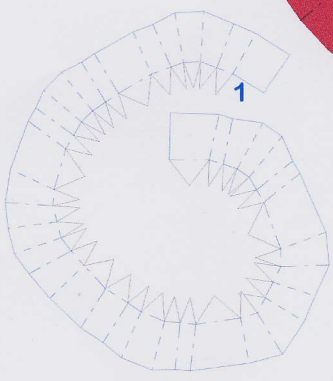
6-4



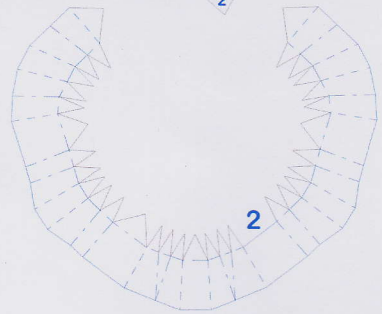
6-2



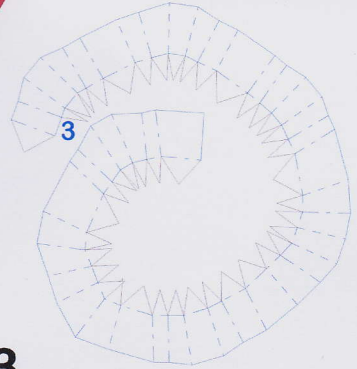
俯视图



1

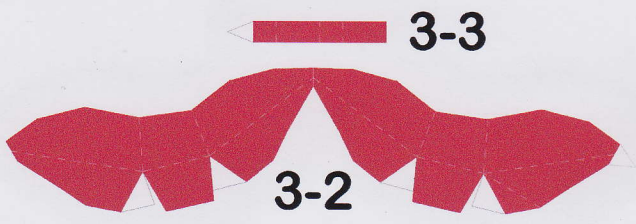


2



3

6-3



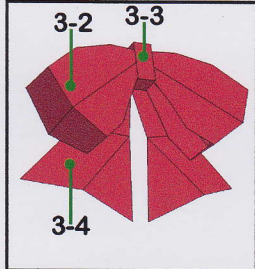
3-2



3-3



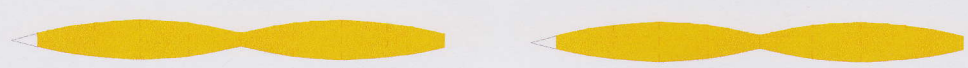
3-4



3-2

3-3

3-4



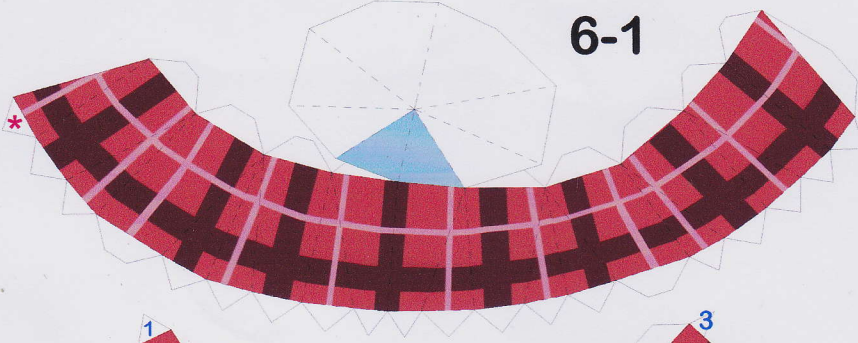
1-15

请反面打印蝴蝶结色 —■ ■



备份

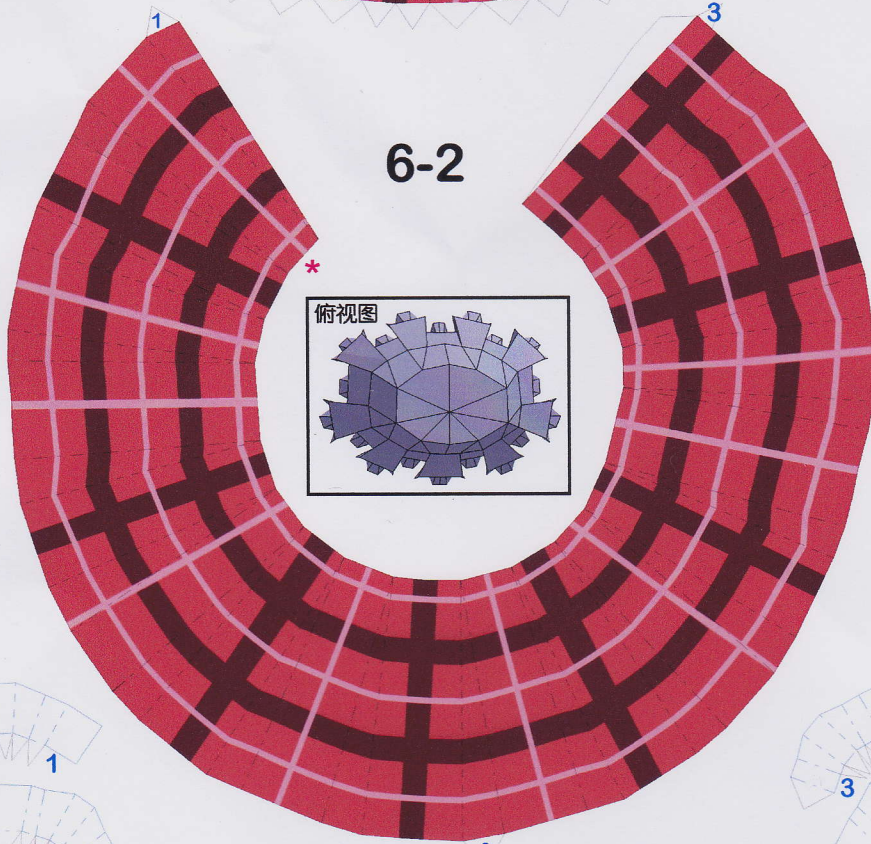
6-1



6-4



6-2



6-3

